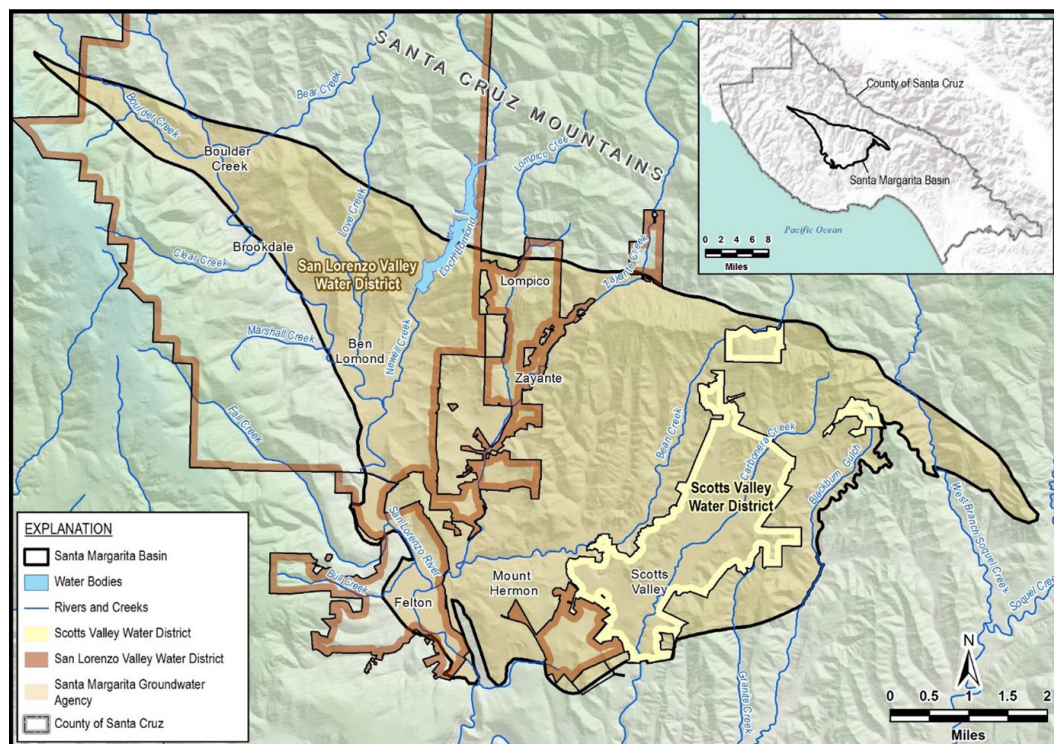


SANTA MARGARITA Groundwater Agency

Sustainably Managing our Local Groundwater Resources

The Santa Margarita Groundwater Agency (SMGWA) oversees groundwater management of the Santa Margarita Groundwater Basin in Santa Cruz County, California. The agency was formed in 2017 by the San Lorenzo Valley Water District, Scotts Valley Water District and the County of Santa Cruz to comply with the requirements of the Sustainable Groundwater Management Act (SGMA) of 2014. The SMGWA Board of Directors includes two representatives from each of the member agencies, one from the City of Scotts Valley, one from the City of Santa Cruz, one from the Mount Hermon Association Community Water System and two private well owner representatives.



The Santa Margarita Groundwater Basin covers an area of 34.8 square miles (22,249 acres). The Basin is home to an estimated 29,000 residents, and includes the City of Scotts Valley, and the communities of Boulder Creek, Brookdale, Ben Lomond, Lompico, Zayante, Felton and Mount Hermon. On average, groundwater meets about 80% of the Basin's water supply needs and feeds local streams to serve important habitat needs. To maintain local control of the Basin, SMGWA is required to develop and implement a Groundwater Sustainability Plan (GSP) and monitor and report on Basin conditions to the California Department of Water Resources (DWR).

Key Accomplishments:

- Secured \$1.6 million in State grants to support GSP development and improve the Basin monitoring network
- Developed a GSP with input from water suppliers, community members and technical experts to demonstrate groundwater sustainability by 2042 per SGMA requirements
- Submitted the GSP in January 2022 that was approved by DWR in April 2023
- Completed a groundwater monitoring network needed to demonstrate SGMA compliance
- Submitted Annual Reports since required beginning in 2022

Board of Directors

Chris Perri, Chair

Scotts Valley Water District

Bryan Largay, Vice-Chair

San Lorenzo Valley Water District

Edan Cassidy, Secretary

Well Owner Representative

Doug Engfer

City of Santa Cruz Water Department

Cara Hutchison

Well Owner Representative

Manu Koenig

County of Santa Cruz

Alina Layng

San Lorenzo Valley Water District

Wade Leishman

Scotts Valley Water District

Monica Martinez

County of Santa Cruz

Dale Pollock

Mt. Hermon Association

Allan Timms

City of Scotts Valley

For more information, visit www.smgwa.org



2024 Water Conditions

SANTA MARGARITA Groundwater Agency

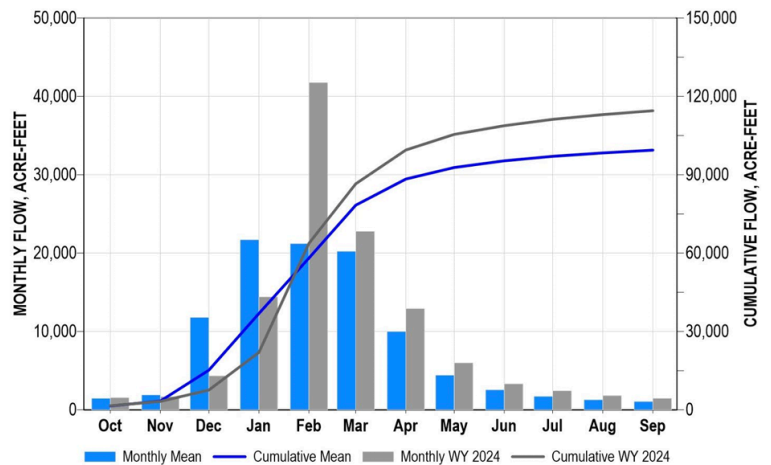
2024 was a normal water year

- 44.1 inches of rain at Boulder Creek (88% of average)
- 32.7 inches of rain in Scotts Valley (79% of average)
- 115,000 acre-feet (AF) of annual flow measured on the San Lorenzo River at Big Trees (115% of average)

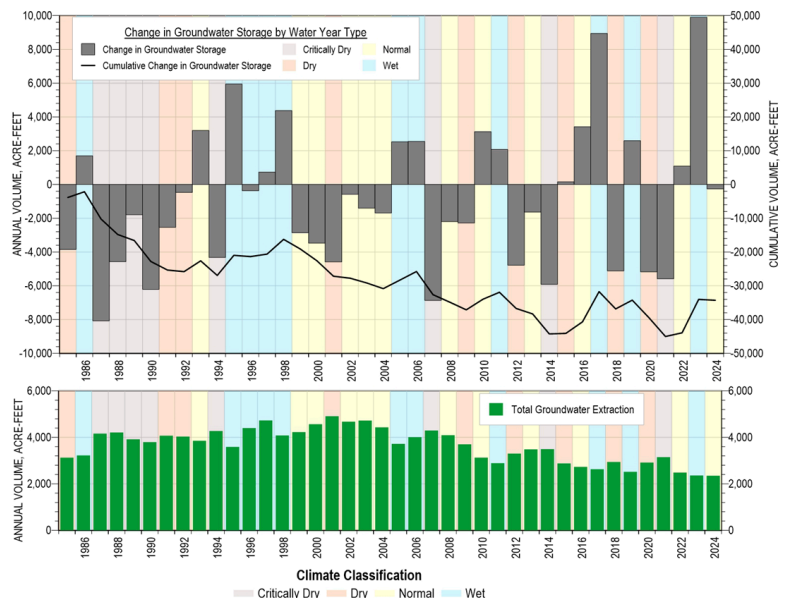
Basin Conditions Were Good in 2024

- Second lowest total water use dating to 1985 – 3,725 AF
- Lowest groundwater use dating to 1985 – 2,346 AF
- Estimated decrease of groundwater in storage for year of -260 AF
- Maintained sustainable conditions as defined by SMGA indicators applicable in the Basin

Surface water flow on San Lorenzo River compared to 30-year mean



Groundwater extraction and change in Basin storage



For more information, see
the full Annual Report at
[www.smrgwa.org/
AnnualGSPReports](http://www.smrgwa.org/AnnualGSPReports)



SGMA sustainability indicators used in the Basin



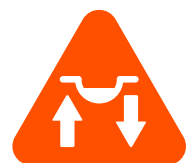
Lowering GW
Levels



Reduction of
Storage



Degraded
Quality



Surface Water
Depletion